



REFLECTIONS
at
Valencia NorthPark
By Greystone Homes



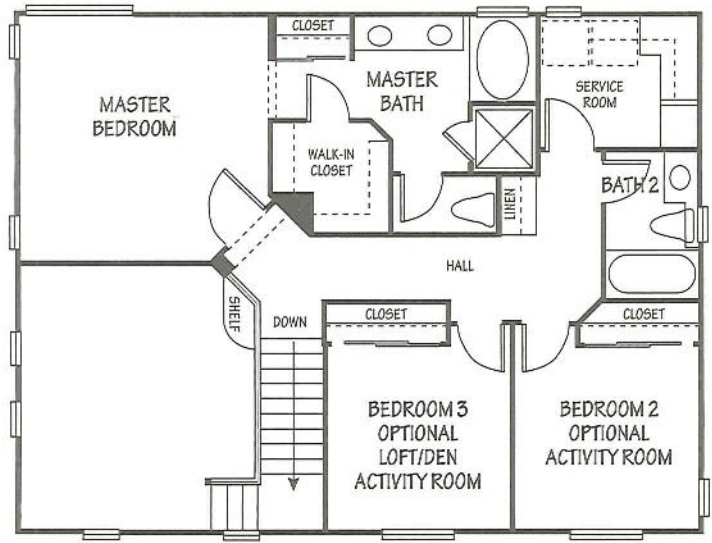
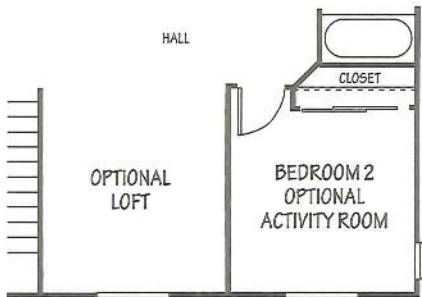
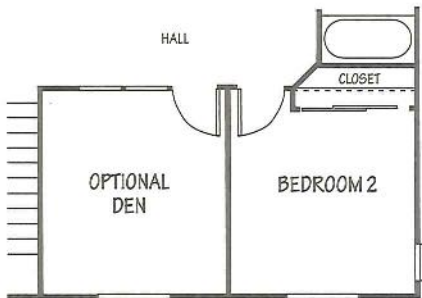
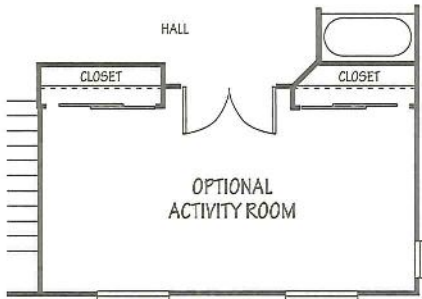
Life in the Nineties. The swift pace of your daily routine. Weekends filled with necessary chores. Wouldn't it be nice to find the time to slow the pace a notch or two? To reflect back on the wonders of yesteryear, and cherished childhood memories.

Introducing Reflections at Valencia NorthPark by Greystone Homes. A neighborhood inspired by those pleasant times of the past, and a special place to do a little dreaming about the future.

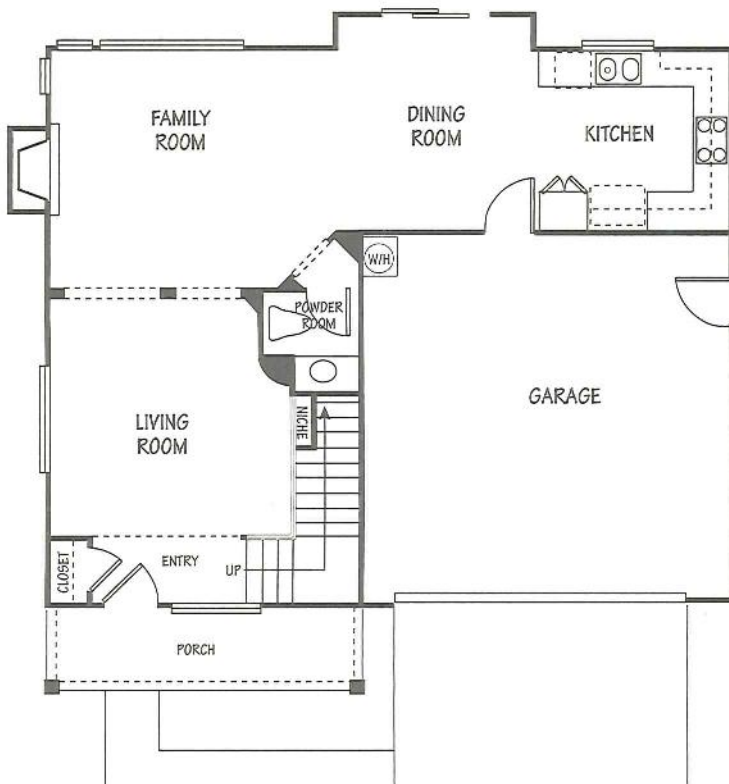
Reflections at Valencia NorthPark. You've found the home for your family.



Plan One DAYDREAM



Second Floor



3 Bedrooms, 2 1/2 Baths
Optional Activity Room, Optional Den
1,633 Square Feet



1A



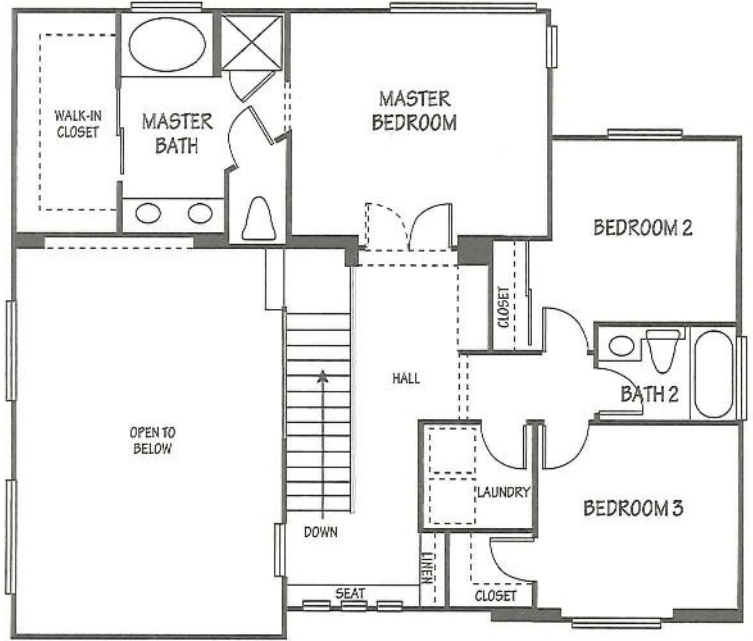
1B



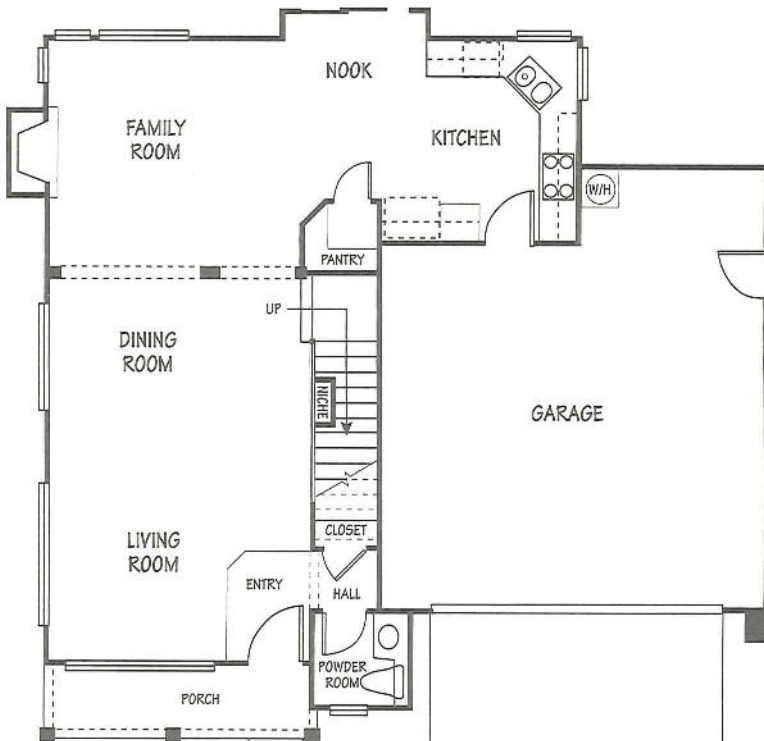
1C



Plan Two STORYBOOK



Second Floor



First Floor

3 Bedrooms, 2 1/2 Baths
1,711 Square Feet



2A



2B

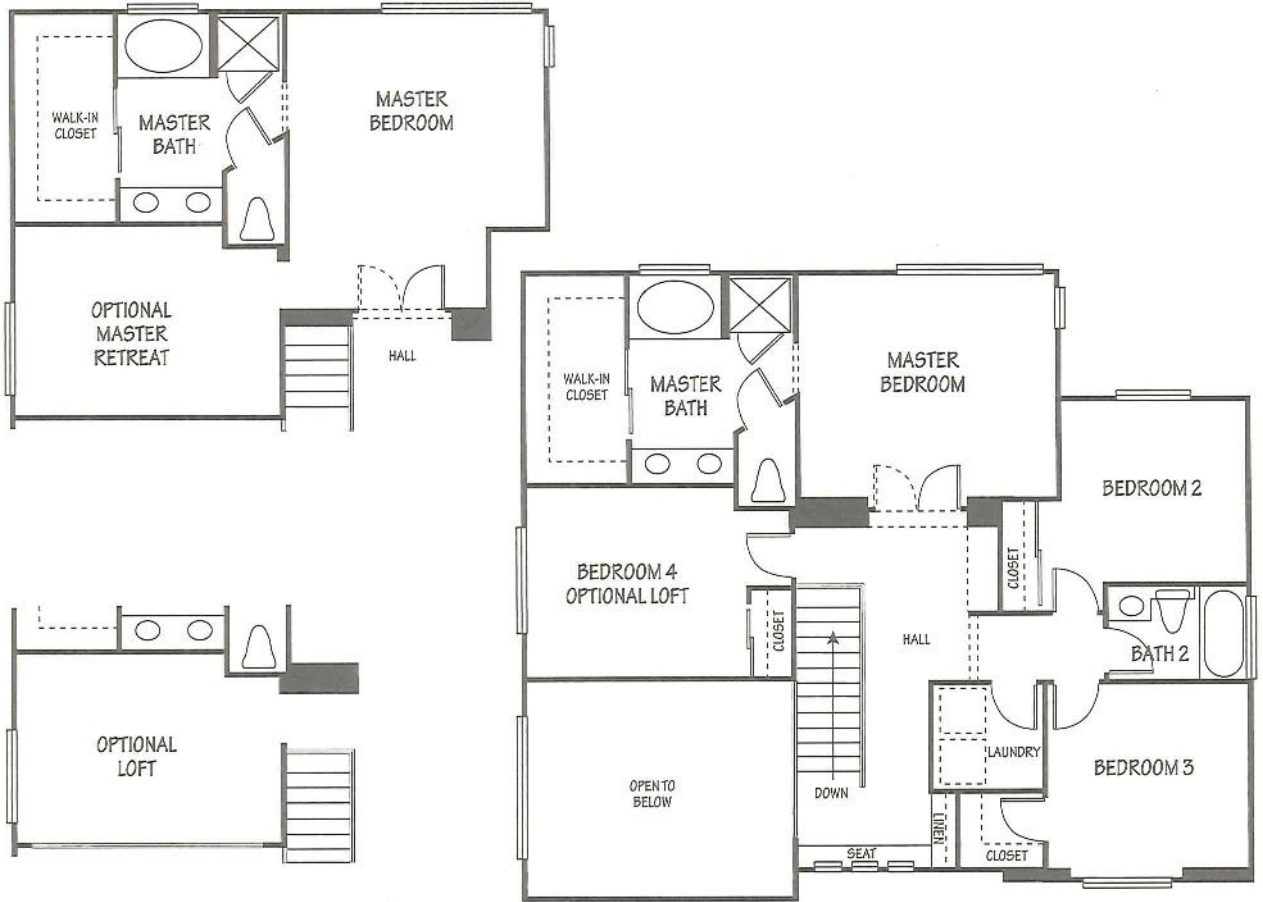


2C

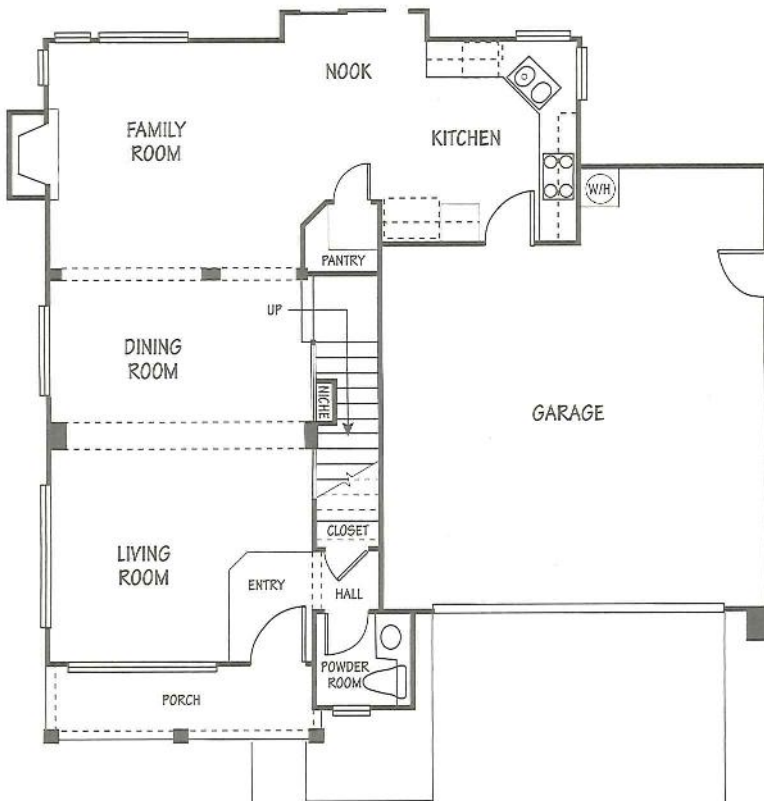


Plan Three KEEPSAKE

Not on model tour. Please see sales representative for details.



Second Floor



First Floor

4 Bedrooms, 2 1/2 Baths
Optional Retreat, Optional Loft
1,882 Square Feet



3A



3B



3C

Custom Appointments

PRIDE OF OWNERSHIP

- Color-blended fire-resistant tile roof
- Architecturally coordinated exterior colors
- Sectional roll-up metal garage doors
- Complete side and rear yard fencing for privacy
- Concrete driveway, walks and oversized porch
- Gas stub in rear yard for future barbeque
- Painted, raised panel front entry doors
- Polished brass interior hardware
- Landscaped front yards with automatic irrigation

WELL-APPOINTED INTERIORS

- Dramatic volume ceilings in selected areas
- Ceramic tile entry flooring
- Elegant wall-to-wall carpeting with a wide array of color selections
- Custom radius wall corners
- Kitchen opens to spacious family room
- Traditional six panel interior doors with decorative polished brass hardware
- Economical forced-air heating and air conditioning with night set back thermostat for energy savings
- Pre-wired for cable television in all bedrooms and family room
- Pre-wired for telephone in all bedrooms and kitchen
- Light texture on walls and ceilings
- Gas burning fireplace with logs and glass panel
- Solid oak stair handrail with painted wood spindles

FAMILY KITCHENS

- Hand-set ceramic tile countertop
- Natural oak finish cabinetry with white vinyl interiors and adjustable shelves in pantry and upper cabinets
- Upgraded white-on-white appliance package including: 30" sealed burner gas cooktop with built-in self cleaning electric oven
Energy saving 4-cycle dishwasher with 8 options
- Conveniently located storage pantry
- Compartmental sink with heavy duty waste control
- Single-lever kitchen faucet with separate sprayer
- Refrigerator area plumbed with recessed valve for ice maker

LUXURIOUS MASTER BEDROOM SUITE AND BATH

- Matte-finish cultured marble pullman
- Dual vanity sinks with traditional chrome fixtures
- Compartmental water closet with elongated water-saving toilet
- Generous walk-in closet
- Decorator-selected vanity lighting
- Separate tub and shower with ceramic tile surround

SECONDARY BATHS

- Matte-finish cultured marble pullman with chrome fixture
- Fiberglass tub and shower combination
- Decorator bar lighting

BONUS APPOINTMENTS

- Conveniently located second floor laundry room
- Smoke detectors throughout

ENERGY EFFICIENT FEATURES

- Dual glazed windows and patio door
- Energy efficient 50 gallon water heater with automatic pilotless ignition
- Water saving toilets
- Economical gas forced-air heating with pilotless ignition
- Gas hook-up in laundry area
- Full weatherstripping on all exterior doors
- R-13 exterior wall insulation; R-19 roof insulation

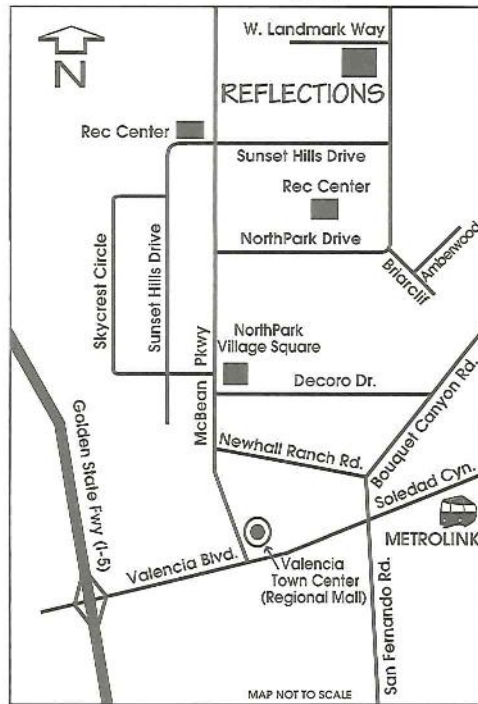
CUSTOM ENHANCEMENTS

- Reflections at Valencia NorthPark By Greystone Homes offers a wide variety of custom enhancements to allow your home to be tailored to meet your unique lifestyle.





Valencia NorthPark™



Valencia

Home To The American Family®



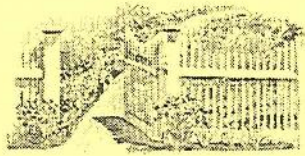
REFLECTIONS at Valencia NorthPark By Greystone Homes

23324 West Landmark Way
Valencia, California 91354

(805) 296-9392 FAX (805) 296-9266



GREYSTONE
HOMES



REFLECTIONS
at
Valencia NorthPark
By Greystone Homes

Plan One

DAYDREAM

Priced from

\$ 199,990

3 Bedrooms, 2 1/2 Baths
Optional Activity Room, Optional Den, Optional Loft
1,633 Square Feet

Plan Two

STORYBOOK

Priced from

\$ 207,990

3 Bedrooms, 2 1/2 Baths
1,711 Square Feet

Plan Three

KEEPSAKE

Priced from

\$ 217,990

(not shown as a model home)

4 Bedrooms, 2 1/2 Baths
Optional Retreat, Optional Loft
1,882 Square Feet

390

23324 West Landmark Way, Valencia, California 91354

(805) 296-9392 (805) 296-9266 FAX